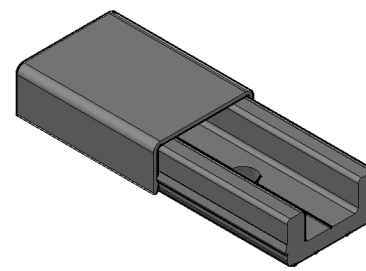
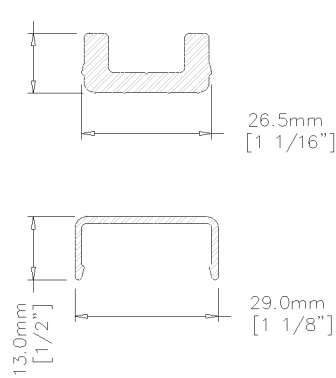
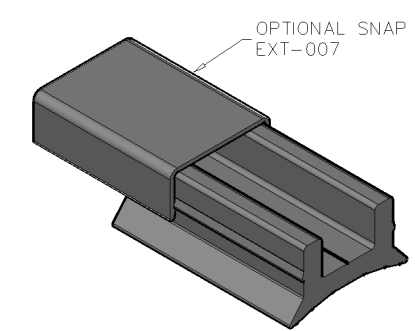
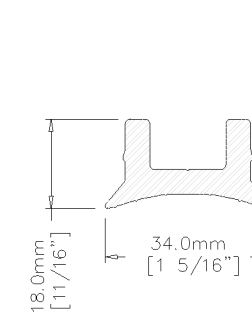


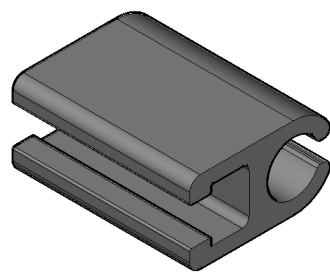
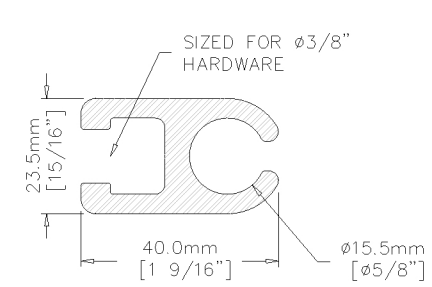
13mm Double Rail Keder Track
 Stock Number: EXT-005
 Stock Length: 15'-0"



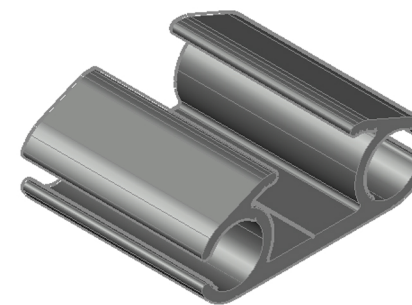
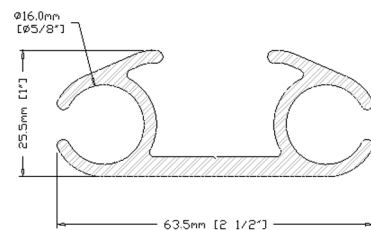
Termination Bar / Snap Cap
 Stock Number: EXT-006 / EXT-007
 EXT-006 has 9/32" Holes on 6" Center
 Stock Length: 12'-0"



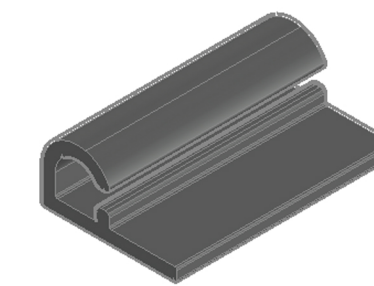
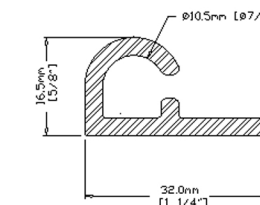
Termination Bar Radius Base
 Stock Number: EXT-038
 9/32" Holes on 6" Center
 Stock Length: 12'-0"



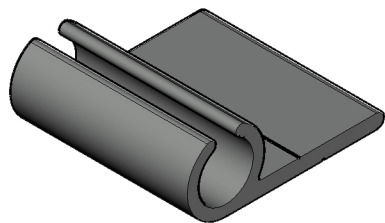
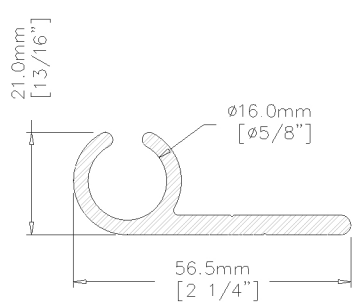
13mm Tensioning Extrusion Small
 Stock Number: EXT-015
 Stock Length: 15'-0"



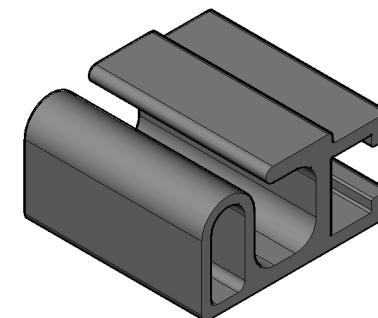
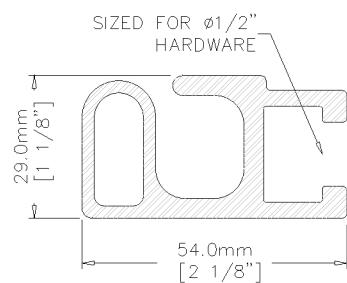
13mm Double Rail Keder Track, Flat Bottom
 Stock Number: EXT-042
 Stock Length: 20'-0"



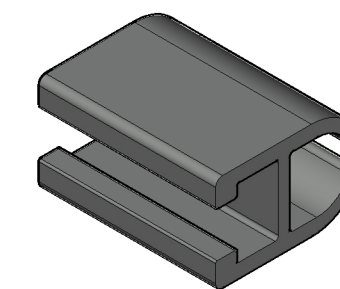
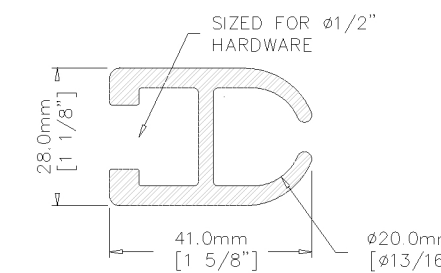
7mm Single Rail Keder Track, 180 Deg.
 Stock Number: EXT-041
 Stock Length: 12'-0"



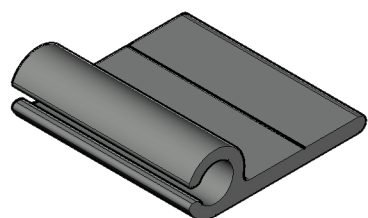
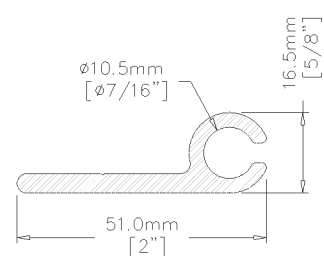
13mm Single Rail Keder Track 90 Deg.
 Stock Number: EXT-035
 Stock Length: 20'-0"



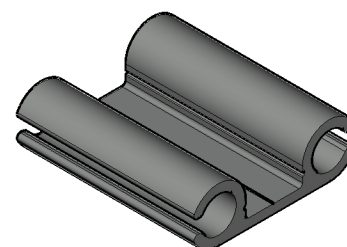
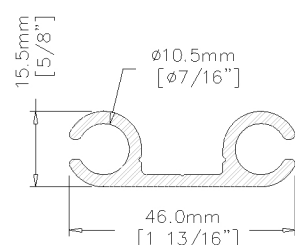
Top Entry Extrusion
 Stock Number: EXT-037
 Stock Length: 15'-0"



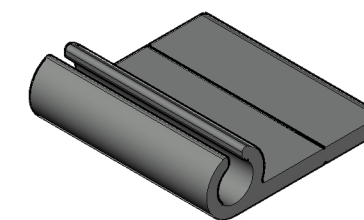
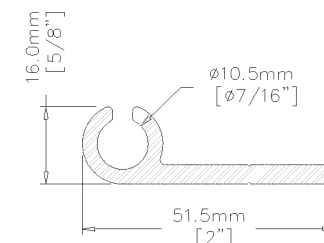
Tensioning Extrusion 1/2"
 Stock Number: EXT-034
 Stock Length: 15'-0"



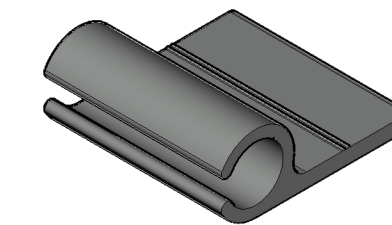
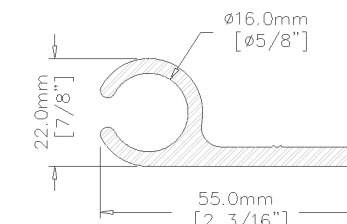
7mm Single Rail Keder Track
 Stock Number: EXT-010
 Stock Length: 15'-0"



7mm Double Rail Keder Track
 Stock Number: EXT-012
 Stock Length: 15'-0"



7mm Single Rail Keder Track 90 Deg.
 Stock Number: EXT-031
 Stock Length: 20'-0"



13mm Single Rail Keder Track
 Stock Number: EXT-016
 Stock Length: 15'-0"



Lightweight Manufacturing Inc.
 1139 Sumner Ave.
 Whitehall, PA 18052
 Phone: 610-435-4720
 Email: Sales@lightweightmanufacturing.com

All Extrusions 6061 T6 Alloy, Mill Finish (Unless Otherwise Specified)
 Cutting Services May Be Available for Additional Charge
 FCA Whitehall, PA 10852

