

Transparency
and natural light

.....
new Color
Collection
.....

Soltis

Horizon 86

Applications

Façade blinds, veranda and glass roof blinds, drop-arm awning, pergolas and canopies, roll-up valances and shade sails



■ Excellent transparency

Soltis Horizon 86 provides excellent outward visual contact to enjoy the view even when the awning is lowered. It proves its efficiency by blocking up to 93% of the heat in outdoor use.

■ Optimized natural light contribution

Soltis Horizon 86 promotes natural light intake. This is beneficial in terms of:

- energy savings by reducing the use of artificial lighting
- the well-being, health and productivity of people in a professional or private environment.

■ Harmonized ranges

All the colors of Soltis Horizon 86 are coordinated with Soltis Perform 92 to:

- harmonize all the façades of a building
- meet visual comfort needs according to each façade's orientation
- adjust thermal protection to save energy.

BLOCKS UP TO
93%
OF THE HEAT

ALLOWS NATURAL
LIGHT TRANSMISSION
OF UP TO
28%

Soltis Horizon 86 - 3 key properties



Dimensional stability

thanks to Précontraint® technology



Easy to clean

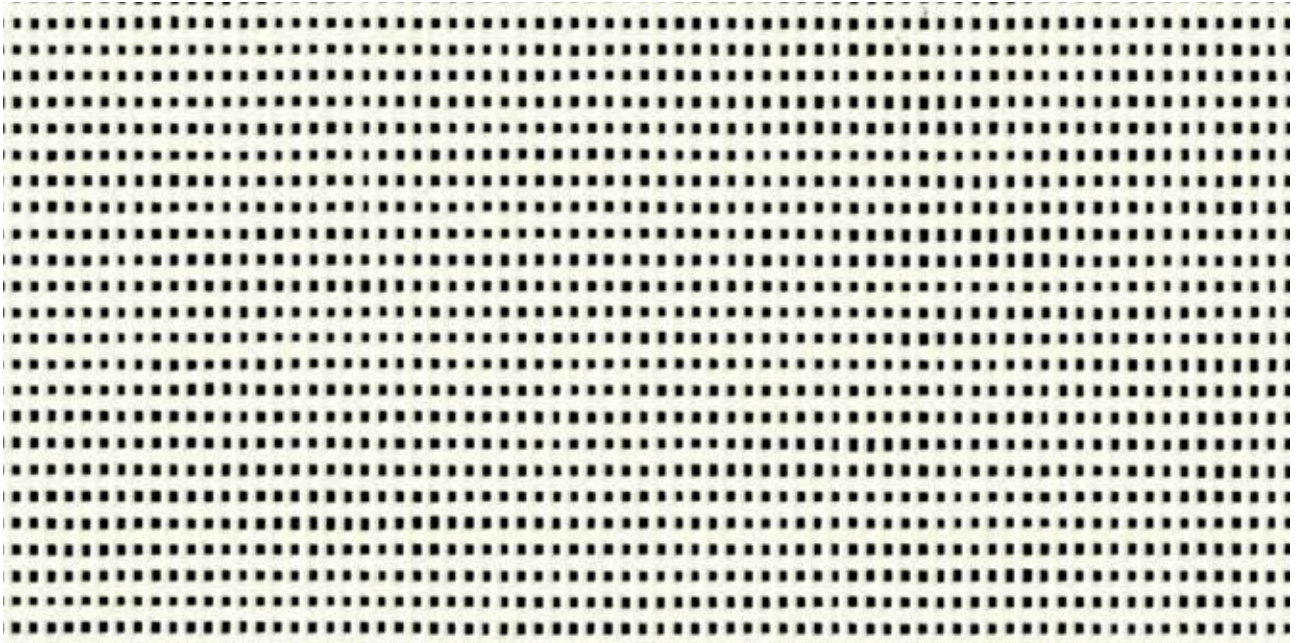


UV resistant



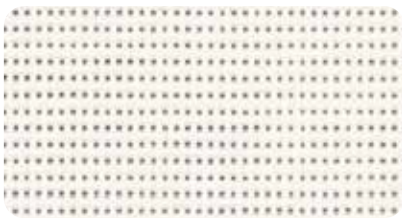
Soltis

Horizon 86



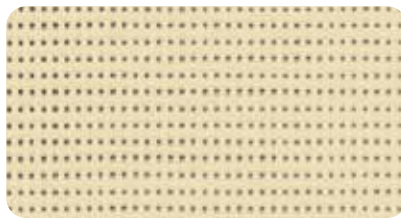
new Snow white 69.6 in — 105.1 in

86-50690



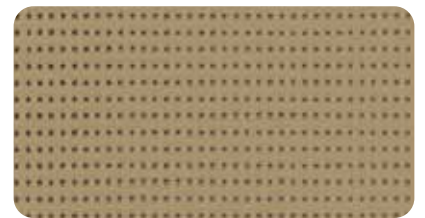
White 69.6 in — 105.1 in

86-2044



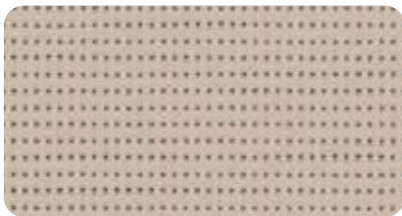
Champagne 69.6 in — 105.1 in

86-2175



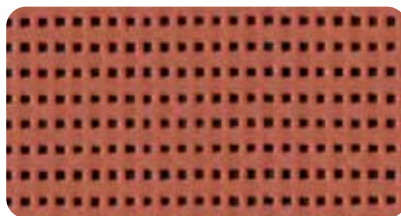
Pepper 69.6 in — 105.1 in

86-2012



Sandy beige 69.6 in — 105.1 in

86-2135



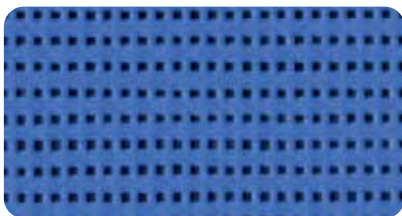
new Brick 69.6 in

86-51180



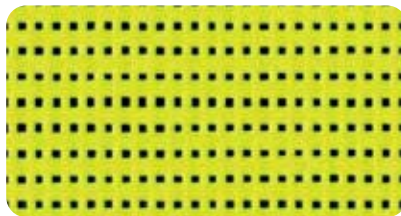
new Deep red 69.6 in

86-51181



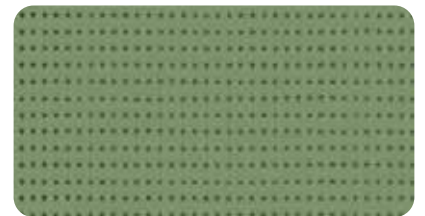
new Deep blue 69.6 in

86-51182



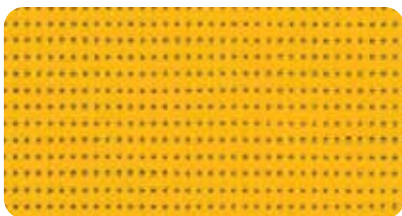
Aniseed 69.6 in

86-2157



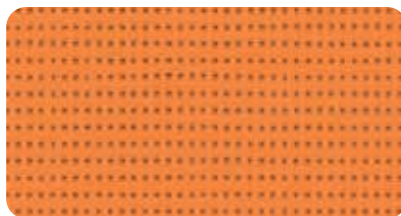
Moss green 69.6 in

86-2158



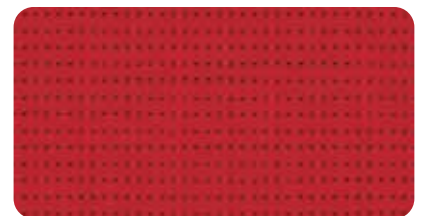
Buttercup 69.6 in

86-2166



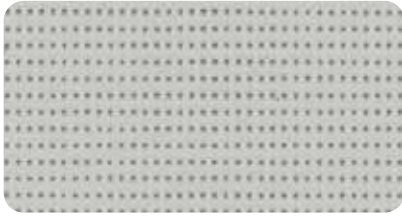
Orange 69.6 in

86-8204

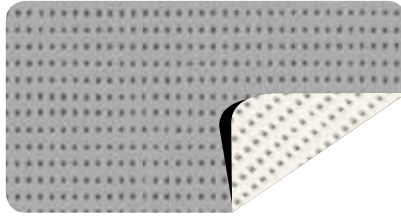


Red 69.6 in

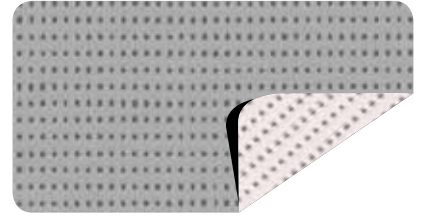
86-8255



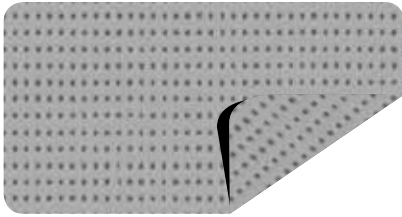
Boulder 69.6 in — 105.1 in 86-2171



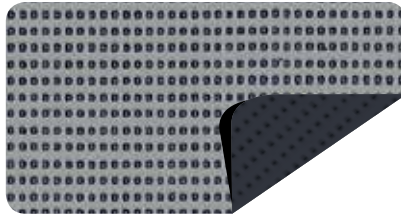
Alu/White 69.6 in — 105.1 in 86-2051



Alu/Oat 69.6 in — 105.1 in 86-2046



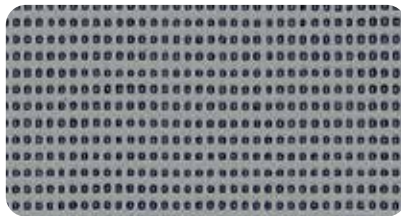
Alu/Alu 69.6 in — 105.1 in 86-2048



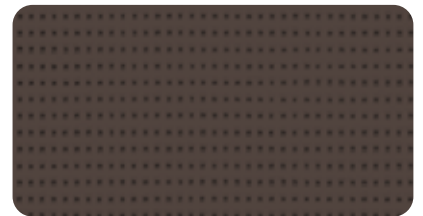
Alu/Anthracite 69.6 in 86-2068



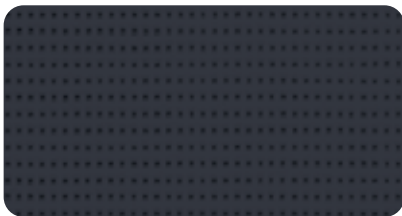
Concrete 69.6 in — 105.1 in 86-2167



Beaten metal 69.6 in — 105.1 in 86-2045



Bronze 69.6 in — 105.1 in 86-2043



Anthracite 69.6 in — 105.1 in 86-2047



new Deep black 69.6 in — 105.1 in 86-51176

new Color Collection

A range of colors to match every kind of project

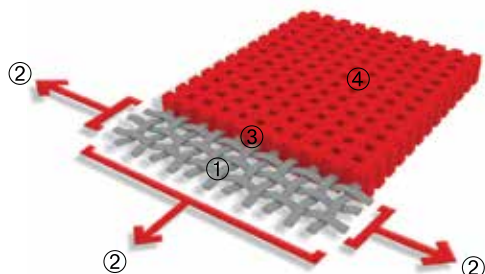
The new Soltis Horizon 86 range features colors designed by our design office to complement the building's entire environment (joinery, openings and façades). The colors present tones that match the most common colors (RAL and NCS references).



Download
our RAL and NCS
color correspondence

■ Exclusive Précontraint® Technology

This unique globally patented technology consists of maintaining the composite in bi-axial tension throughout the manufacturing cycle. This gives our materials outstanding performance allowing them to surpass market standards in terms of dimensional stability, mechanical strength, coating thickness and flatness.



High-tenacity polyester micro-yarn weave ①	Superior elongation and tear resistance
Coating under bi-axial constant tension in both warp and weft directions ②	No deformation during processing and use
Greater coating at the top of the yarns and dirt-resistant surface treatment ③	Superior aesthetic and mechanical durability
Exceptional flatness and thinness ④	Smooth finish easy to clean, space saving, easy rolling

■ Light and solar properties (according to EN 14501 standard)

		Width (in)		TS	RS	AS	TV n-h	ISO 52022-3* Glazing D	
		69.6	105.1					g_{tot}^e	g_{tot}^i
86-2012		•	•	18	27	55	16	0.08	0.24
86-2043		•	•	15	11	74	15	0.07	0.28
86-2044		•	•	29	59	12	28	0.11	0.15
86-2045		•	•	16	29	55	16	0.08	0.23
86-2046 A		•	•	22	40	38	21	0.10	0.16
86-2046 B		•	•	22	55	23	21	0.09	0.20
86-2047		•	•	17	7	76	17	0.07	0.28
86-2048		•	•	19	39	42	19	0.09	0.20
86-2051 A		•	•	22	40	38	20	0.09	0.13
86-2051 B		•	•	22	60	18	20	0.09	0.20
86-2068 A		•		17	31	52	17	0.08	0.23
86-2068 B		•		17	7	76	17	0.09	0.28
86-2135		•	•	24	39	37	22	0.09	0.21
86-2157		•		25	44	31	21	0.08	0.21
86-2158		•		18	25	57	16	0.08	0.25
86-2166		•		31	45	24	28	0.11	0.21
86-2167		•	•	17	14	69	17	0.07	0.26
86-2171		•	•	22	36	42	20	0.08	0.21
86-2175		•	•	30	57	13	28	0.11	0.16
86-8204		•		29	41	30	21	0.10	0.23
86-8255		•		21	24	55	14	0.07	0.27
new 86-50690		•	•	28	61	11	27	0.11	0.14
new 86-51176		•	•	14	5	81	14	0.07	0.29
new 86-51180		•		17	24	59	15	0.07	0.26
new 86-51181		•		18	14	68	16	0.08	0.28
new 86-51182		•		18	23	59	15	0.07	0.27

A: Aluminium surface exposed to the sun
B: Colored surface exposed to the sun
TS: Solar Transmission in %
RS: Solar Reflection in %
AS: Solar absorption in %
TS + RS + AS = 100% of the incident energy
TV n-h: Normal Visible light transmission - hemispherical in %
g_{tot}^e : External Solar Factor
g_{tot}^i : Indoor Solar Factor

*Detailed method
ISO 52022-3

Takes into account the spectral values of glazing transmission and reflection + blind complex for calculating the solar factor g_{tot}^e .
Type "D" glazing: insulating double glazing with low emissivity on surface 2 (4 + 16 + 4; Argon filling) $g = 0.32 - U = 1.1$

Soltis

Horizon 86

	■ Technical properties	Standards
Openness factor	14%	
Weight	380 g/m ² • 11.2 oz/sq.yd	EN ISO 2286-2
Thickness	0.45 mm • 450 microns	
Width	177 cm - 267 cm • 69.6 in. - 105.1 in.	

	■ Roll length
Standard piece size: 177 cm • 69.6 in.	50 lm • 54.6 yd
Standard piece size: 267 cm • 105.1 in.	40 lm • 43.7 yd

	■ Physical properties	
Tensile resistance (warp/weft)	230/160 daN/5 cm	EN ISO 1421
Tear resistance (warp/weft)	45/20 daN	DIN 53.363

	■ Reaction to fire	
Rating	M1 /NFP 92-507 — B1 /DIN 4102-1 — BS 7837 — BS 5867 — Schwerbrennbar-Q1-Tr1 /ONORM A 3800-1 Classe 1 /EN 13373 — M1 /UNE 23.727-90 — VKF 5.3 /SN 198898 — 1530.3/ AS /NZS G1 /GOST 30244-94 — Method 1&2 /NFPA 701 — CSFMT19 — Class A /ASTM E84	
Euroclass	B-s2,d0	EN 13501-1

	■ Management system
Quality	ISO 9001
Environmental	ISO 14001
Energy	ISO 50001

■ Certifications, labels, warranty							
							

■ Tools and services
ACV and FDES available on request Tool for evaluating the energy savings that can be achieved with Soltis solar protection: SOLTISSIM. Contact your Serge Ferrari representative.

¹ "+=0" logo: summarises the Serge Ferrari Group's commitment to CSR, to align economic performance and positive impact. Find out about our concrete actions in our CSR report.

The technical characteristics provided are average values with a tolerance of +/- 10%.

Purchasers of our products are responsible for their application or transformation with regard to any third party rights. Purchasers of our products are also responsible for their implementation and installation in compliance with the destination country's best practices and safety rules. Contractual guarantees are included in the terms of the guarantee.

The values mentioned in this document are based on test results in compliance with study practice. These are provided as indications so that customers can obtain optimal performance from using our products. These are subject to technical improvements and we reserve the right to change specifications at any time. Purchasers of our products are responsible for asserting that the data presented above is in compliance with the validity of the above data.